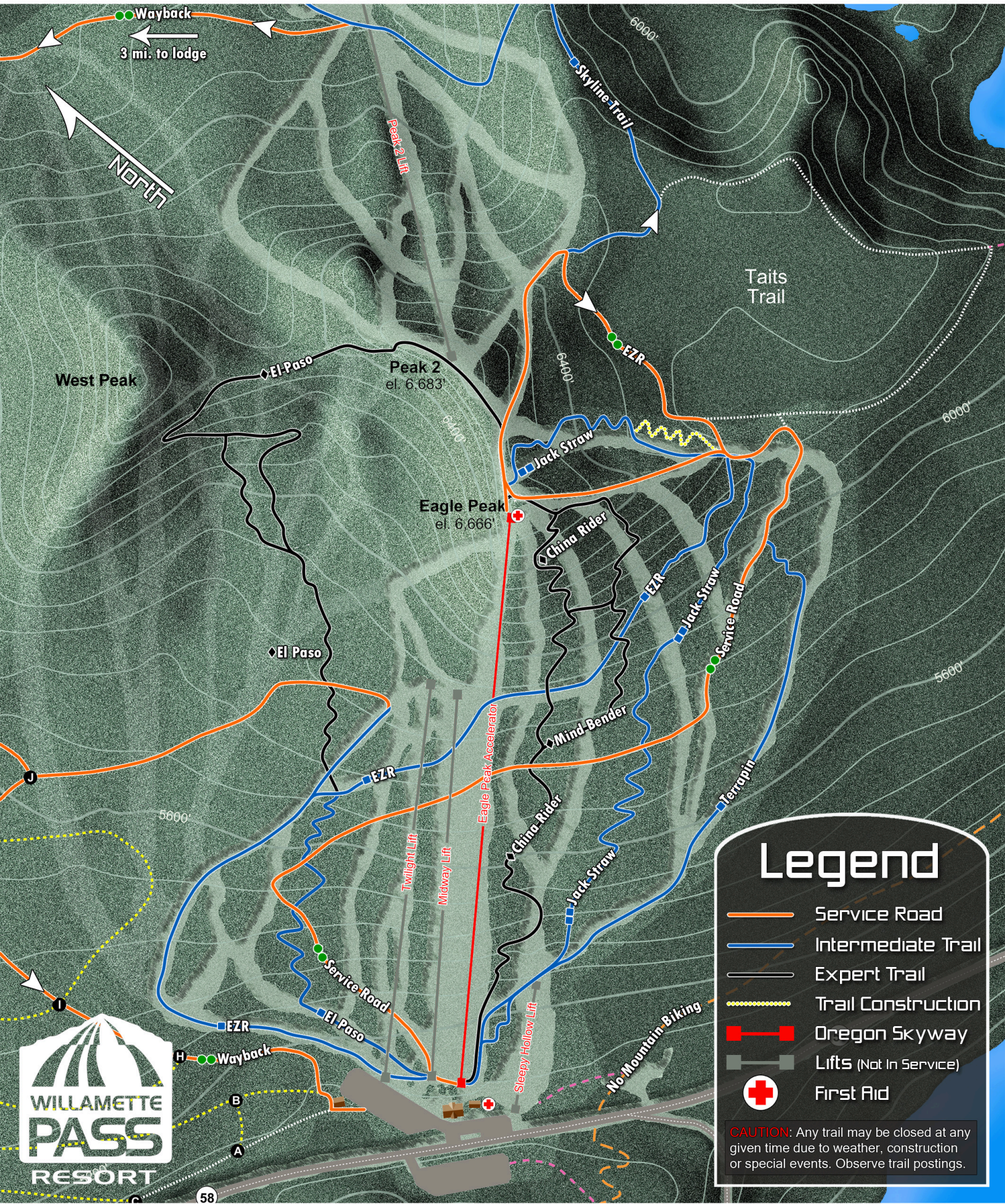


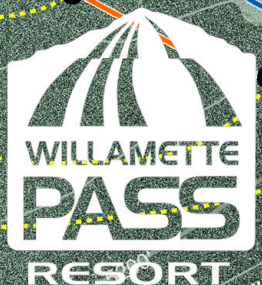
# Mountain Bike Map



## Legend

-  Service Road
-  Intermediate Trail
-  Expert Trail
-  Trail Construction
-  Oregon Skyway
-  Lifts (Not In Service)
-  First Aid

**CAUTION:** Any trail may be closed at any given time due to weather, construction or special events. Observe trail postings.



# WELCOME TO WILLAMETTE PASS RESORT

Summer time at Willamette Pass is filled with endless fun and outdoor adventure. From superb mountain biking to disc golf on our eighteen hole course, there is something for the whole family to enjoy.

Willamette Pass is home to some of the wildest mountain biking around and is one of only two places in Oregon that provides lift serviced access. There are some tame trails too, but our trademark is the kind of stuff that attracts the untamed of the bunch. You better have your groove on, and helmet, gloves, and any body armor you can find. That is unless you take your time or one of the less vertical routes from the top of Eagle Peak.

A variety of mountain bike trails and courses await you, including several downhill mountain bike courses. Additional trails and routes are available for beginners to expert level riders. Know your ability, wear a helmet, and ride responsibly.

Our knowledgeable and experienced staff can help recommend a trail that will meet your desire and skill level, along with answering any additional questions you may have.

We hope you enjoy everything Willamette Pass Resort has to offer during your visit and we're glad you're here.

Happy trail riding,

Randy Rogers

Director of Customer Experience

Mountain bikes are **not** permitted on the Pacific Crest Trail but you can access the Maiden Peak and Gold Lake trail systems just outside our resort boundary.

Oregon Skyway does **not** provide or rent mountain bikes. To rent a mountain bike, the nearest mountain bike rental shops are located in Oakridge, Oregon.

## UPCOMING SUMMER EVENTS (2009)

Date	Event	Price
July 18-19	<b>KING OF THE MOUNTAIN</b> (Leg #2) Challenge your friends and others to see who is King of the Mountain during this disc golf tournament.	<b>Varies by Division</b>
July 25-26	<b>WP DOWNHILL MOUNTAIN BIKE SERIES #1</b> Compete against some of the top athletes in the Northwest during this adrenaline pumping event.	<b>Pre-Reg \$50 DOR \$60</b>
August 8-9	<b>WP DOWNHILL MOUNTAIN BIKE SERIES #2</b> Our second downhill mountain bike series will be just as action packed as the first and is not to be missed.	<b>Pre-Reg \$50 DOR \$60</b>
August 22	<b>100K WHERE'S WALDO RACE</b> This ultramarathon is a challenging 100K loop-type course starting and ending at Willamette Pass Resort.	<b>\$90</b>
August 29	<b>W.A.R.P. DINNER IN THE SKY</b> A truly unique dining experience with a progressive dinner served aboard the Oregon Skyway gondola. <i>A benefit for Willamette Alpine Race Program.</i>	<b>\$59</b>

For registration and the most up-to-date event information, visit [www.oregonskyway.com](http://www.oregonskyway.com)

All events are tentative



INTERNATIONAL MOUNTAIN BICYCLING ASSOCIATION

## IMBA's Rules of the Trail

Because of irresponsible riding, thousands of miles of dirt trails have been closed to mountain bicyclists. Do your part to maintain trail access by observing the following rules of the trail, formulated by IMBA, the International Mountain Bicycling Association. IMBA's mission is to promote environmentally sound and socially responsible mountain bicycling.

1. RIDE ON OPEN TRAILS ONLY
2. LEAVE NO TRACE
3. CONTROL YOUR BICYCLE
4. YIELD TO OTHERS
5. NEVER SCARE ANIMALS
6. PLAN AHEAD

Keep trails open by setting a good example of environmentally sound and socially responsible off road cycling.

## Mountain Biking

Helmets and sturdy shoes with good tread are recommended at all times. Child carriers or tow-behind bikes are not permitted and all bikes must have two working brakes.

Mountain bikers must always yield to other non-motorized trail users. Should you encounter hikers on a trail, you must yield the right-of-way.

## Trail Closures

**CAUTION:** Any trail may be closed at any time due to weather, construction or special events. Observe all trail postings. Failure to respect closed trails may result in lift ticket and/or pass revocation.

## In Case of Emergency

**REPORT ANY INJURIES OR FIRE DANGERS IMMEDIATELY TO ANY WILLAMETTE PASS EMPLOYEE OR EMERGENCY SERVICE PERSONNEL.**

## Do Your Part

Please do your part to protect Willamette Pass Resort's natural beauty, resources and wildlife habitat. **DO NOT LITTER.** Please use trash receptacles at the top and base of the gondola and in the lodge.

## Willamette National Forest

The facilities and trails at Willamette Pass Resort are located within the Willamette and Deschutes National Forests and are under permit from the Forest Service U.S.D.A.

© 2009 Willamette Pass Resort. Designated trademarks are the property of Willamette Pass Resort and Oregon Skyway LLC. All Rights Reserved.